



Compressed Air System Circuit Description

Section 05-01-04

Komatsu has made every effort to make this manual as accurate as possible based on the information available at the time of publication and printing. Continuous improvement and advancement of product design may cause changes to machines, which may not have been included in this publication. Komatsu reserves the right to make changes and improvements at any time. To ensure the most current information, please contact your service center.

Table of Contents

Circuit Descriptions 3

List of Figures

Figure 1. Simplified air system circuits 5

Figure 2. KLENZ™ pulse valve circuit 7

Figure 3. Complete air system – air systems 9

Figure 4. Air distribution system – air systems 10

Figure 5. Brake system - air systems 11

Figure 6. Hydraulic reservoir system – air systems 12

Figure 7. KLENZ™ system – air systems 13

This Page Intentionally Left Blank

Circuit Descriptions

The air compressor is used to compress air which is used to supply various systems on the machine.

- Compressed air from the compressor is passed through an air dryer to remove moisture and debris from the air.
- The air is then passed from the dryer to the distribution reservoir.
- From this reservoir, the air passes to three other reservoirs and the air horn solenoid and cab blow out hose.
- The front and rear brake reservoirs provide air to the brakes of their respective system.
- Check valves are placed between the distribution reservoir and the other reservoirs.
 - Should a leak develop, these check valves prevent air from back feeding into the distribution system.
- Solenoids are used to activate the brake actuators.

This Page Intentionally Left Blank

Air System Circuits

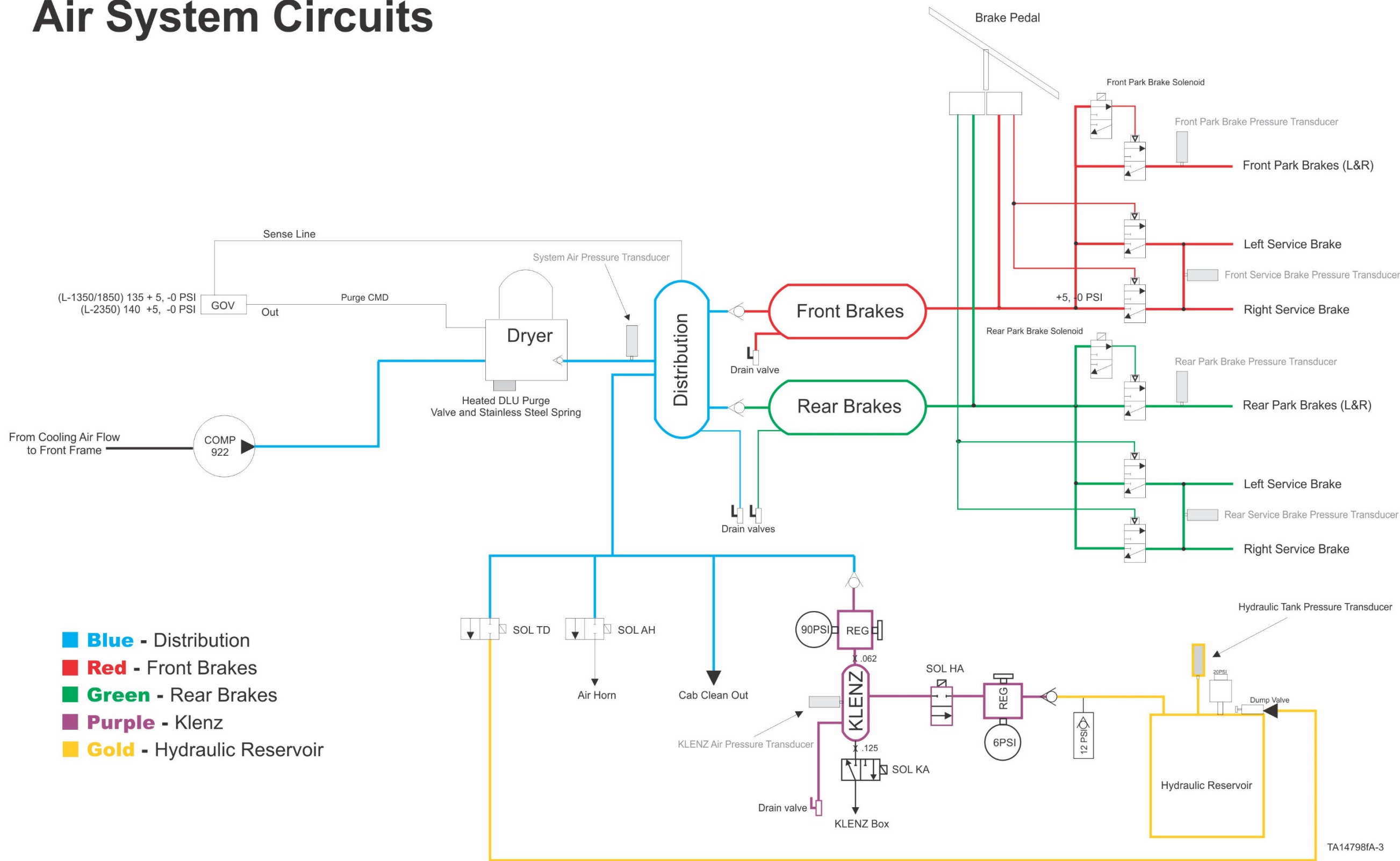


Figure 1. Simplified air system circuits

This Page Intentionally Left Blank

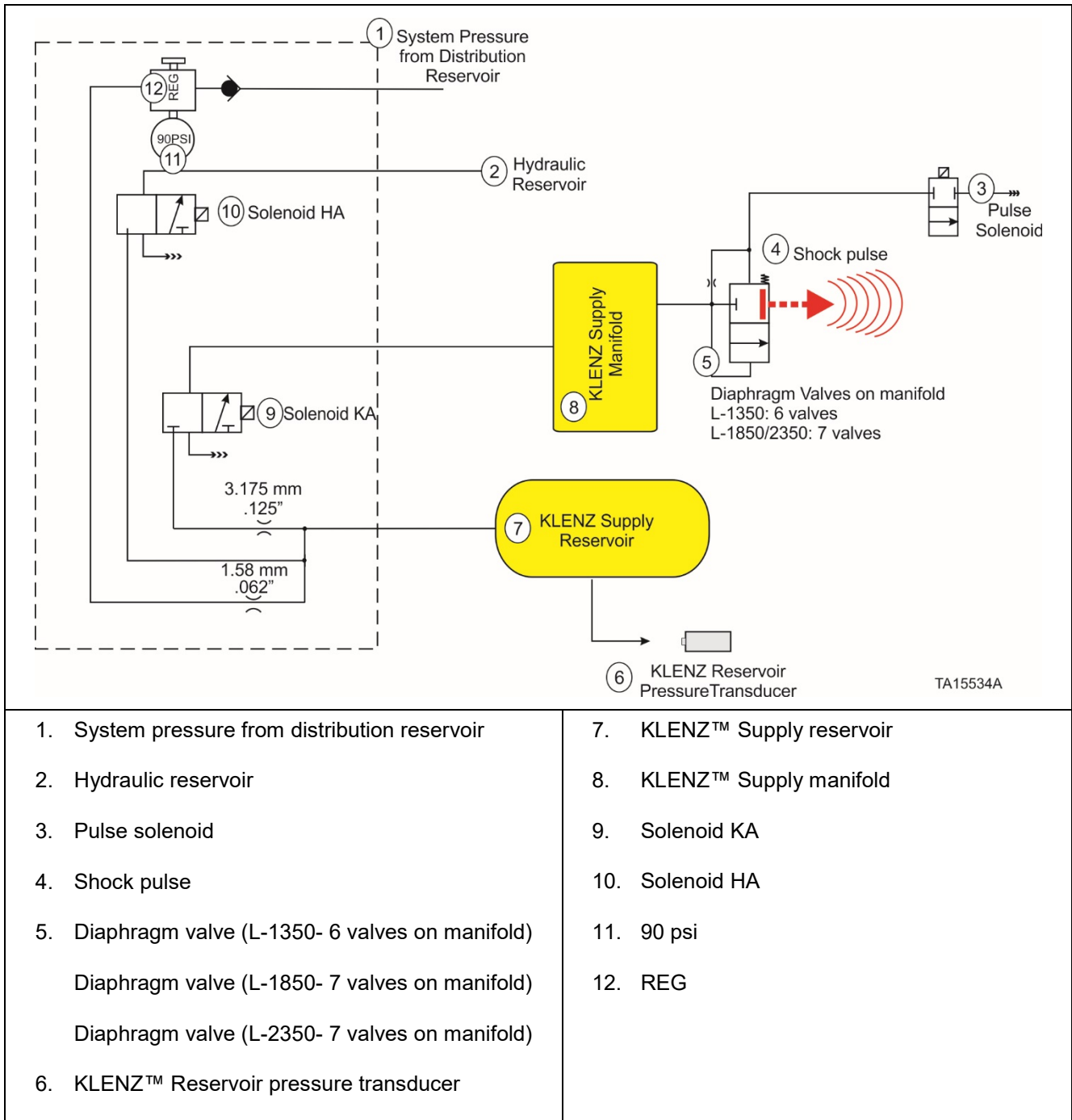


Figure 2. KLENZ™ pulse valve circuit

This Page Intentionally Left Blank

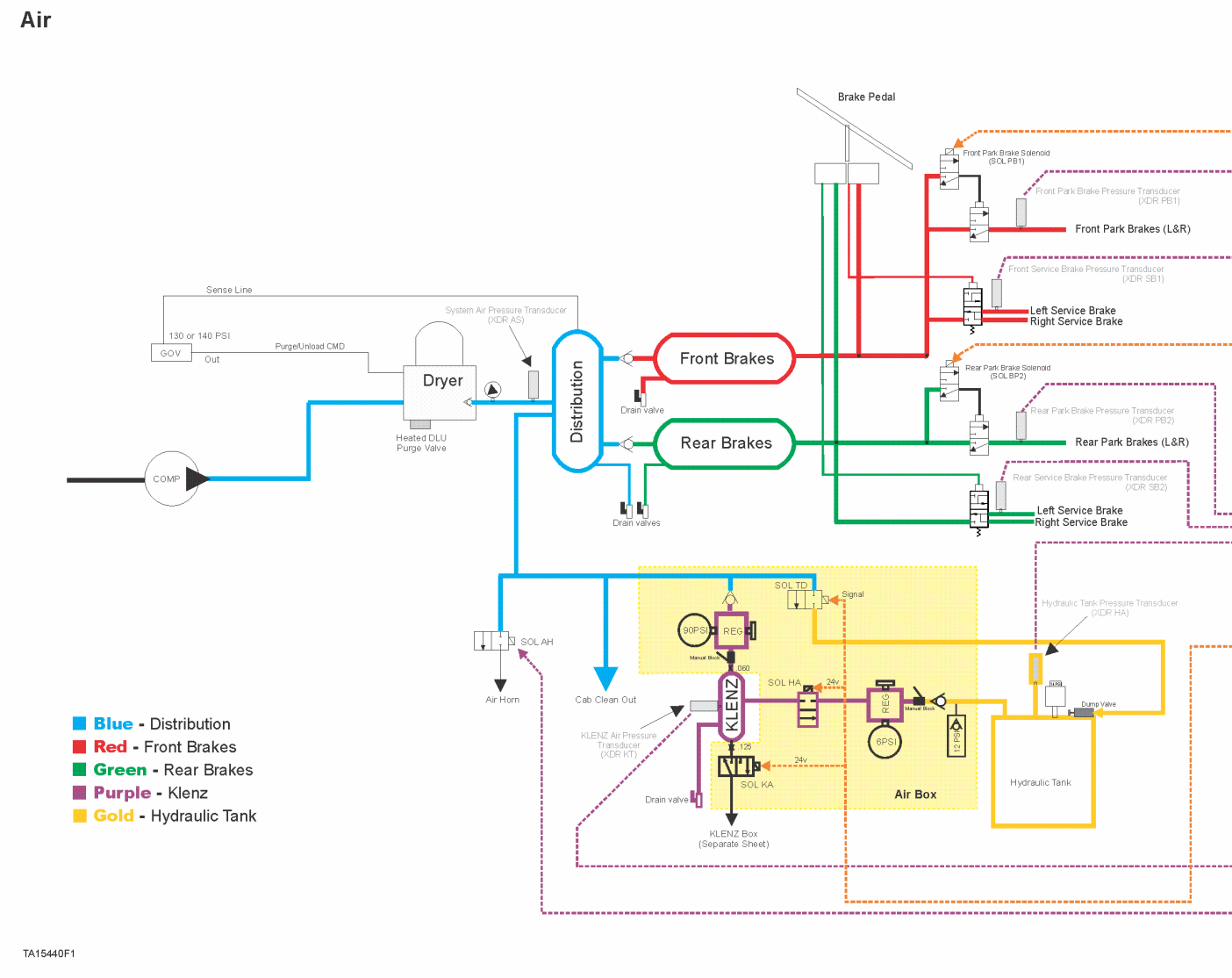
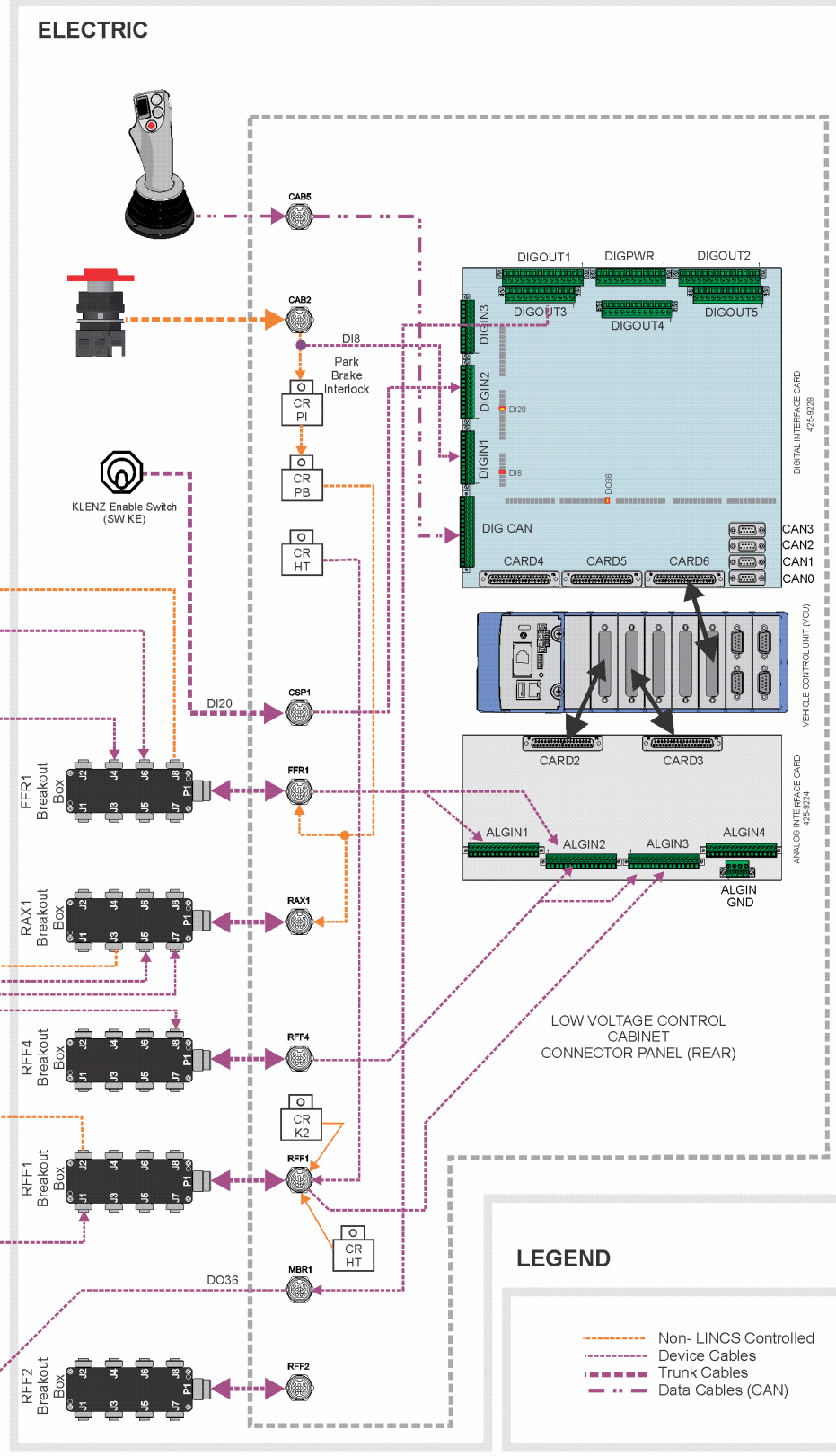
VCU LOGIC

See Circuit Specific Sheets

Notes

The force inputs/outputs functions provide advanced testing functionality. These actions allow the technician with Service Level Access or greater to force either inputs or internal channels of the VCU to a known state. This is an advanced function that is not needed for the diagnosis of most machine issues. Several forces are available via the maintenance screen. All other forces are available only through the channel browser.

ADJUSTMENTS



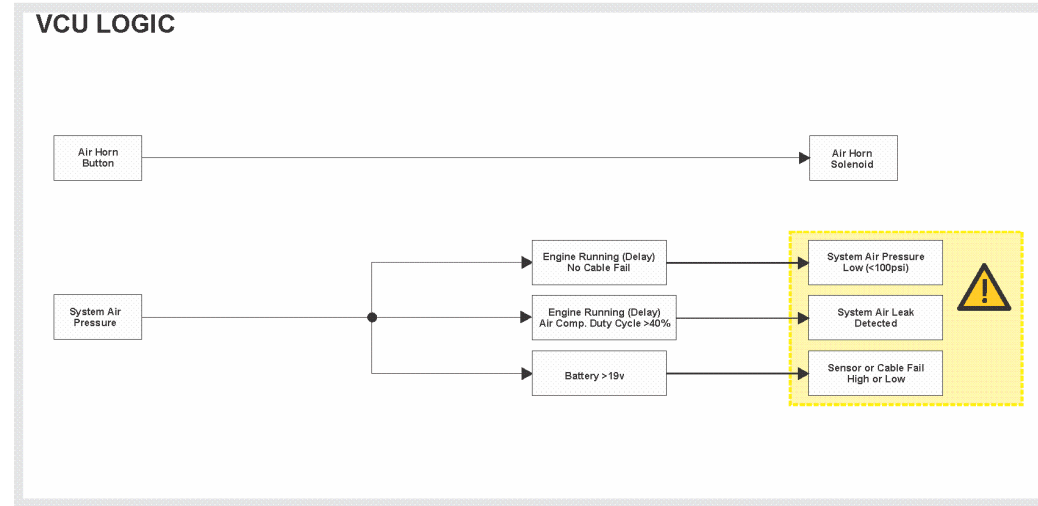
- Blue - Distribution
- Red - Front Brakes
- Green - Rear Brakes
- Purple - Klenz
- Gold - Hydraulic Tank

- LEGEND**
- Non- LINGS Controlled
 - - - Device Cables
 - Trunk Cables
 - Data Cables (CAN)

Complete Air System

GEN 2

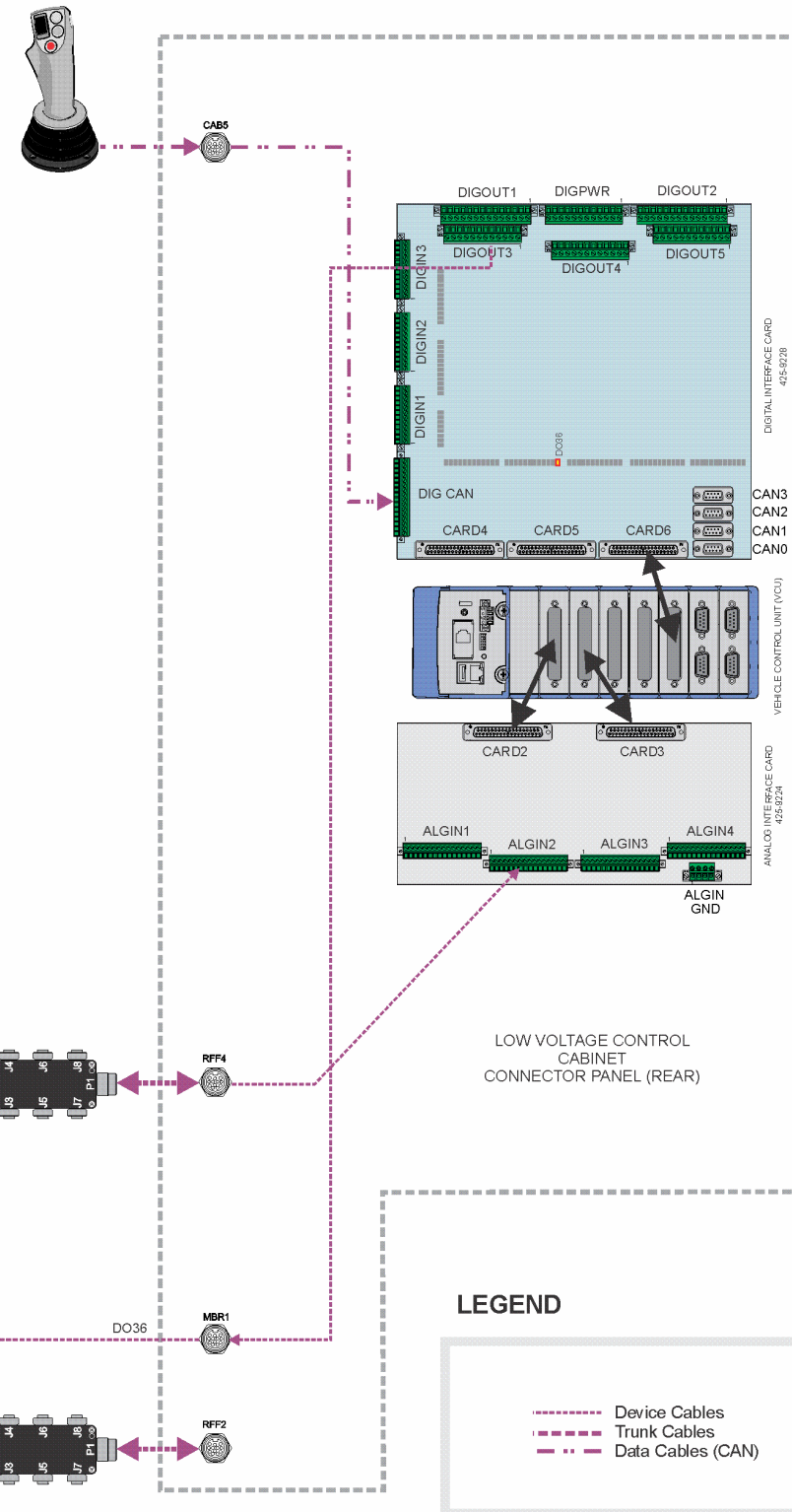
Figure 3. Complete air system – air systems



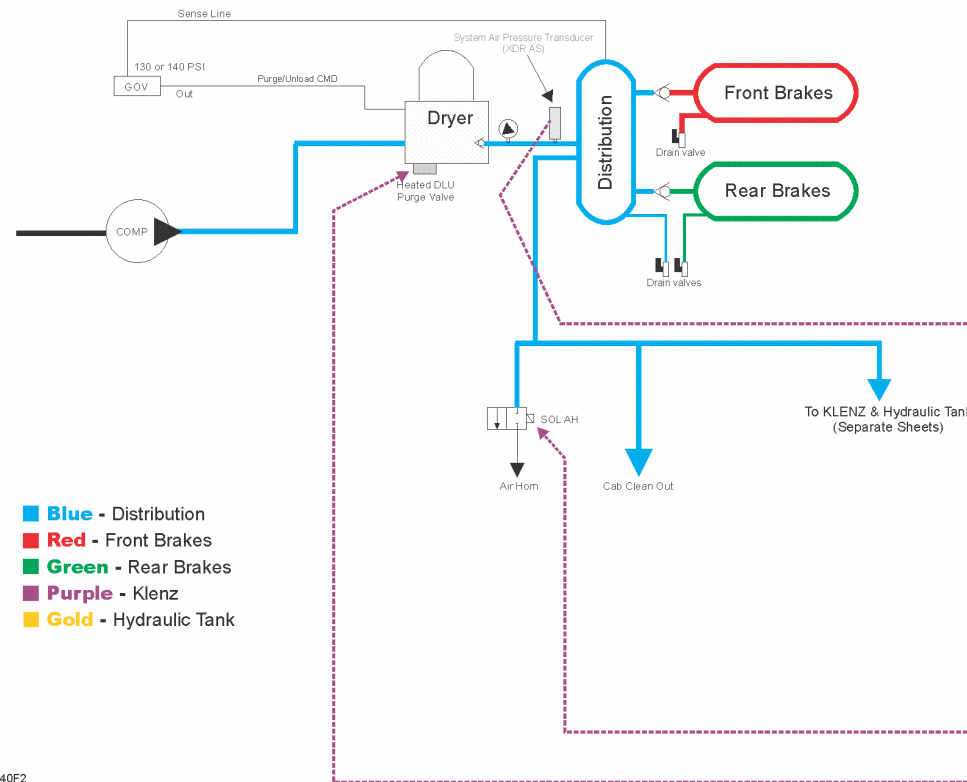
Notes
 The force inputs/outputs functions provide advanced testing functionality. These actions allow the technician with Service Level Access or greater to force either inputs or internal channels of the VCU to a known state. This is an advanced function that is not needed for the diagnosis of most machine issues. Several forces are available via the maintenance screen. All other forces are available only through the channel browser.

ADJUSTMENTS
 Air Governor

ELECTRIC



Air



TA15440F2

Air Distribution System

GEN 2

Figure 4. Air distribution system – air systems

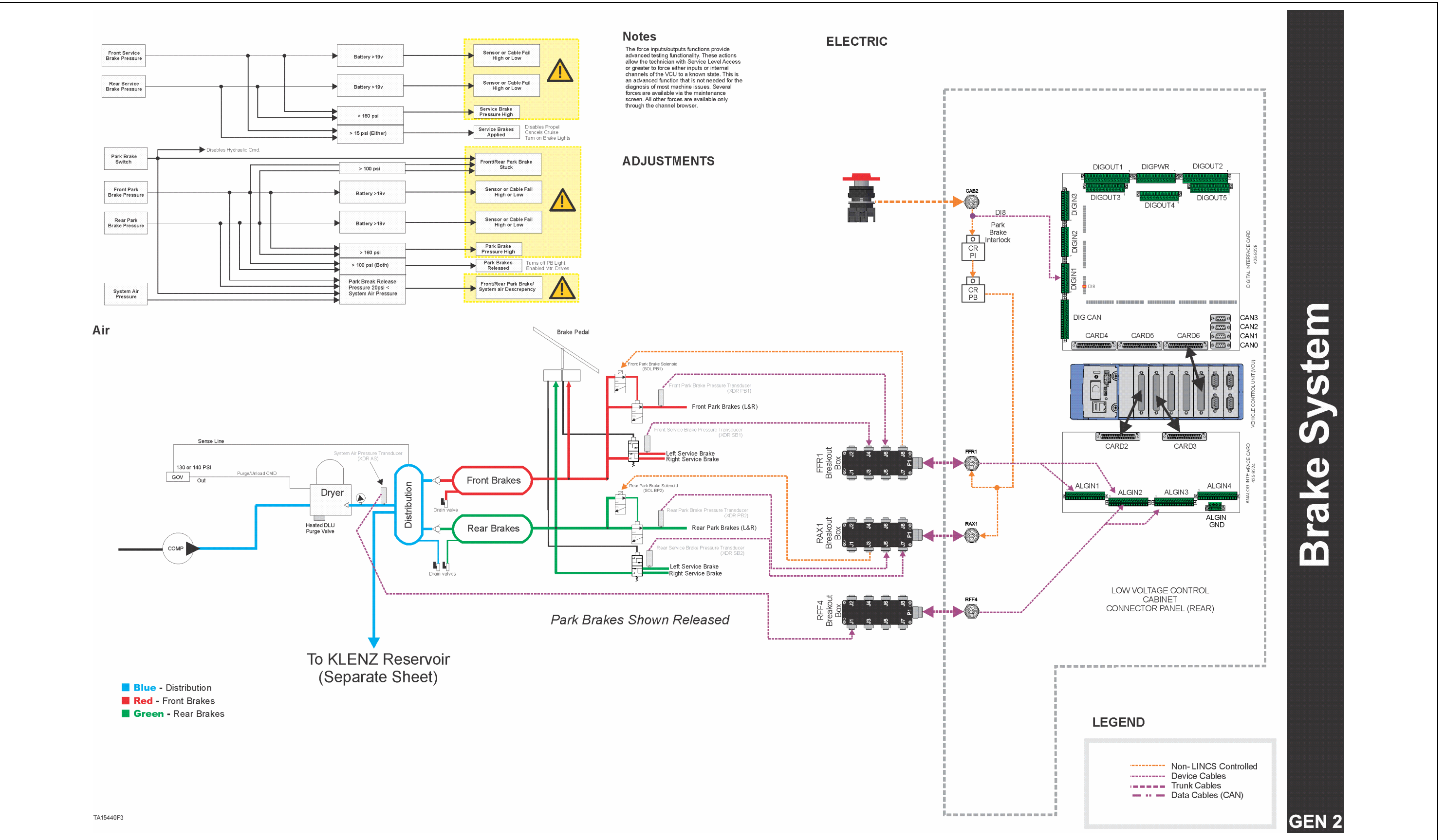
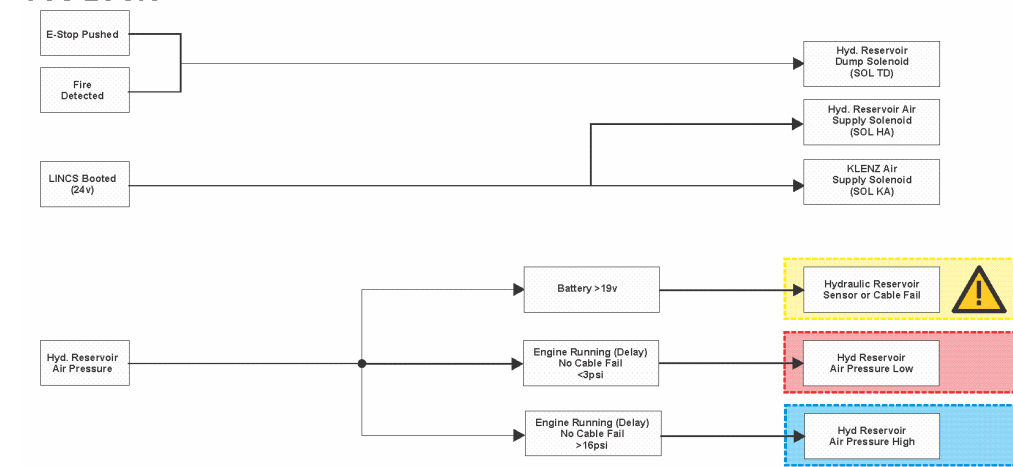


Figure 5. Brake system - air systems

VCU LOGIC



Notes

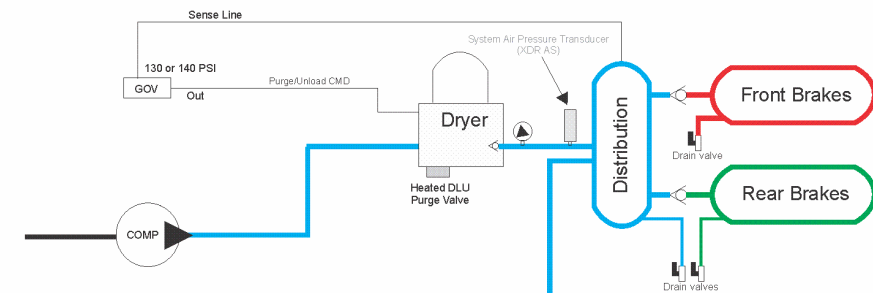
The force inputs/outputs functions provide advanced testing functionality. These actions allow the technician with Service Level Access or greater to force either inputs or internal channels of the VCU to a known state. This is an advanced function that is not needed for the diagnosis of most machine issues. Several forces are available via the maintenance screen. All other forces are available only through the channel browser.

ADJUSTMENTS

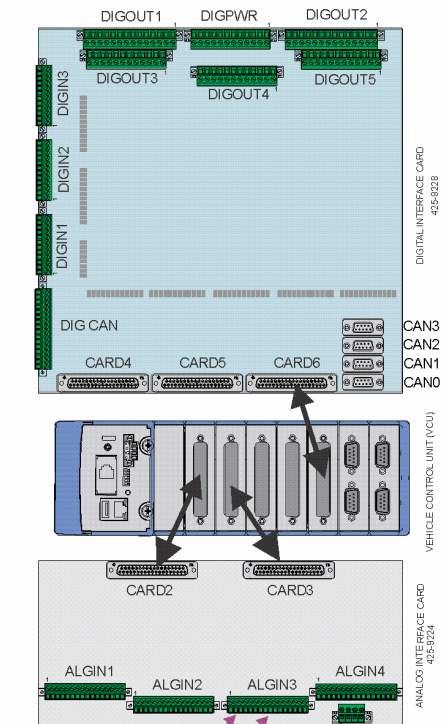
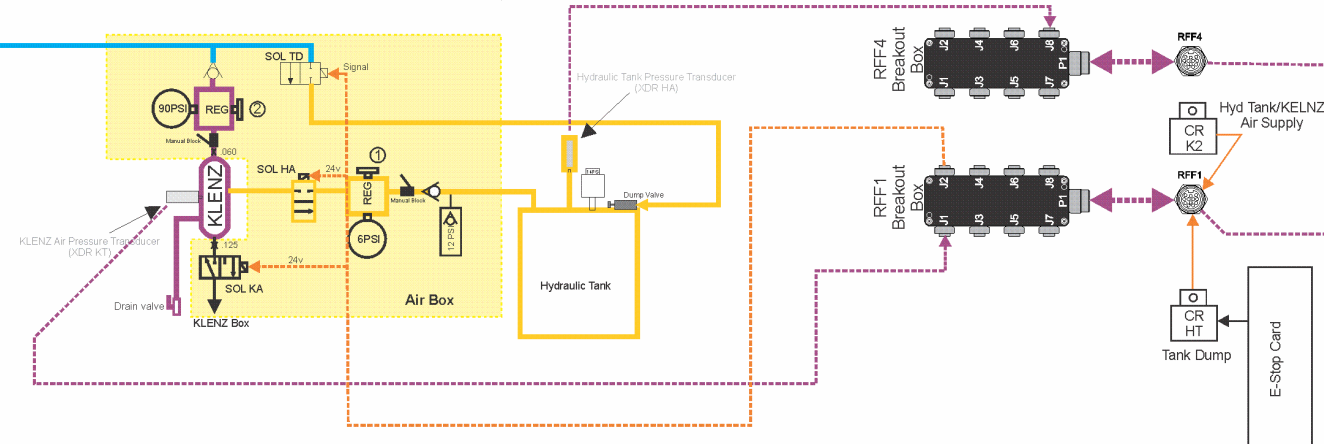
1. Hydraulic tank air regulator
2. KLENZ Regulator

ELECTRIC

Air



- Blue - Distribution
- Purple - Klenz
- Gold - Hydraulic Tank



LOW VOLTAGE CONTROL CABINET CONNECTOR PANEL (REAR)

LEGEND

- Non- LINC3 Controlled Device Cables
- Trunk Cables
- Data Cables (CAN)

Hydraulic Tank System

GEN 2

Figure 6. Hydraulic reservoir system – air systems

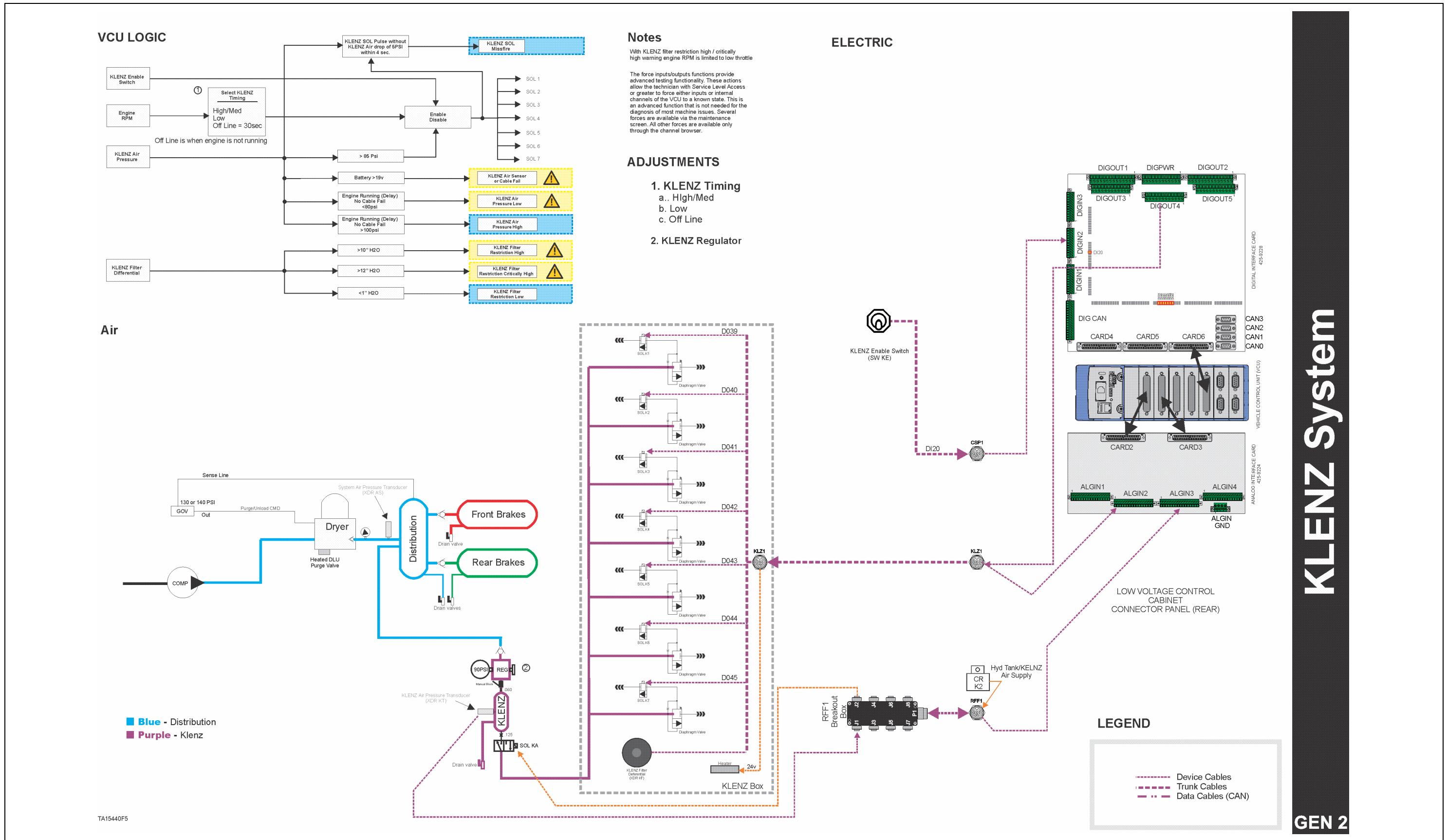


Figure 7. KLENZ™ system – air systems

KLENZ System

GEN 2

This Page Intentionally Left Blank